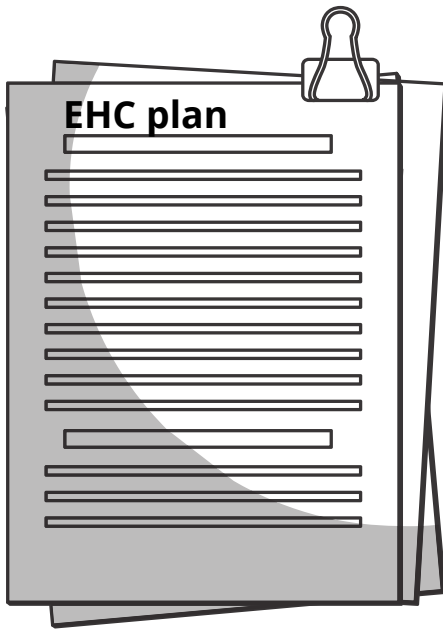


# Educational Health and Care Plans (EHC plan)

Easy read guide



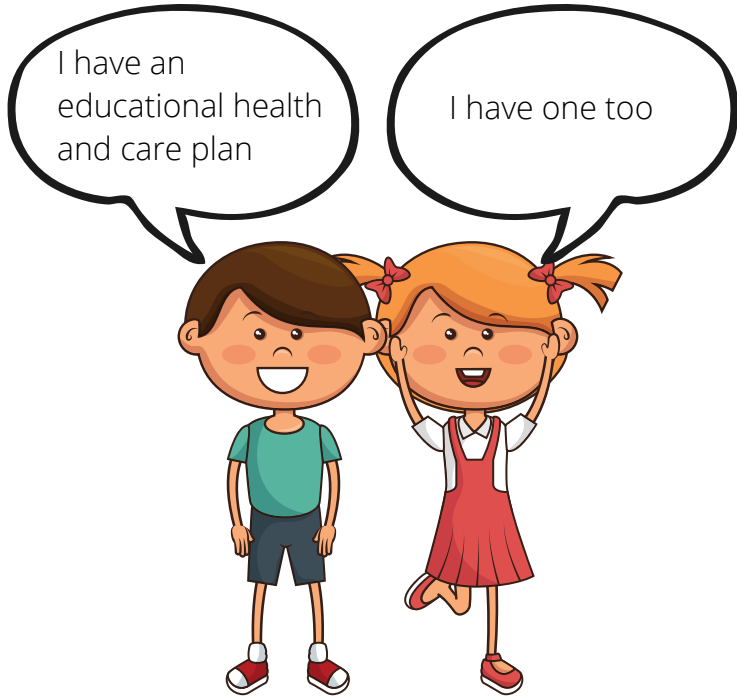
## What is an educational health and care plan?



An educational health and care plan is sometimes called an EHC plan.

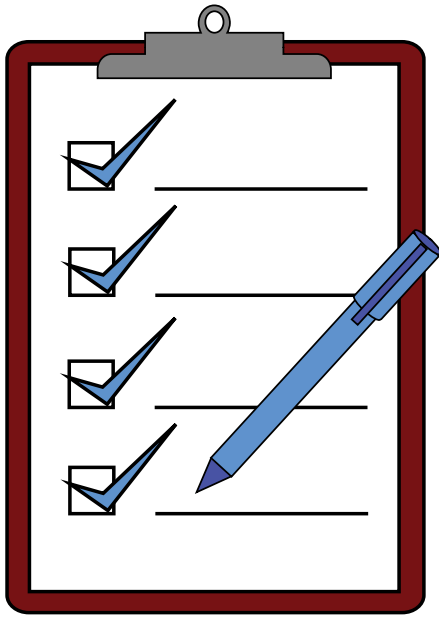


The educational health and care plan is used to make sure you receive the best support for your needs.



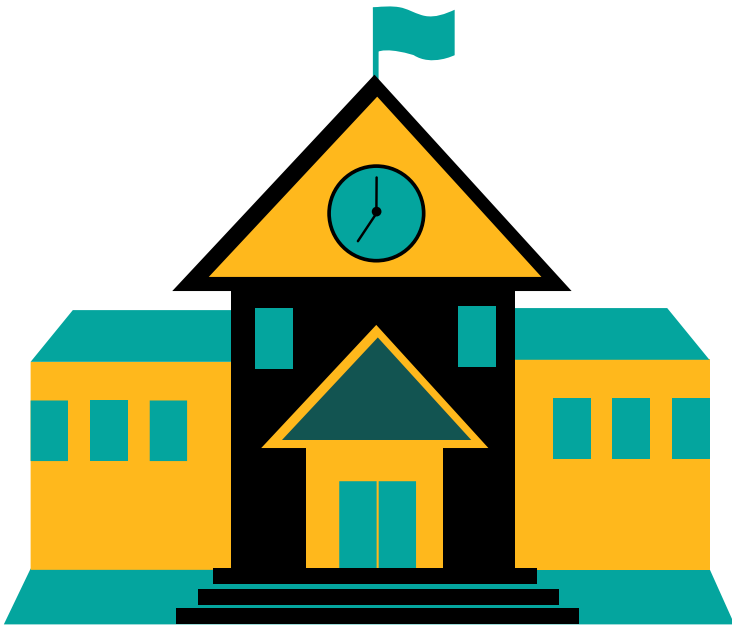
Everyone has a different educational health and care plan because it is about you.

## What is included in the EHC plan?



- Who you are
- How you communicate
- What you want to achieve
- Why you need help
- What kind and how much support you need
- How often you would need support
- Where you go to school or college

## Do you need an educational health and care plan?



Children and young people aged 25 and under that need extra support, that cannot be met by support available in mainstream school or college.

## How will I be involved?



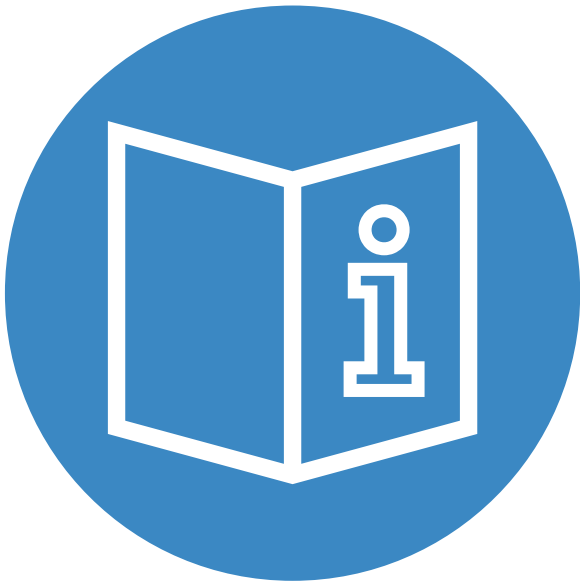
The local authorities must talk to the parent and child or young person throughout making the educational health and care plan.

I want to help make decisions about my future



The child or young persons views, wishes and feelings must be taken into account.

## Where can I get further information about educational health and care plans?



Contact your local SENDIASS also called Special educational needs and disabilities information advice support service.

They can give you information about educational health and care plans.



Visit your Local Authorities local offer online.

See our other easy read to the local offers here  
<https://www.kids.org.uk/the-local-offer>